



VIGNAHARATA TRUST

SHIVAJIRAO S. JONDHLE COLLEGE OF PHARMACY, ASANGAON.

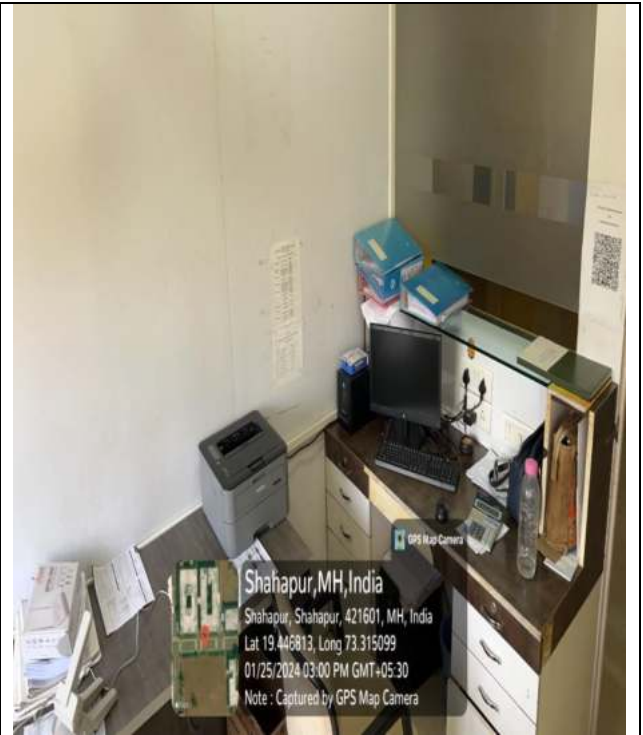
TAL.- SHAHAPUR, DIST.- THANE (M.S.) -421 601

Approved by AICTE, New Delhi, Recog. by Govt. of Maharashtra & PCI - New Delhi

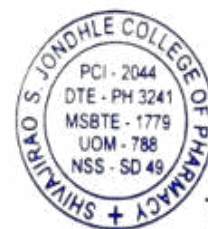
Affiliated to MSBTE & University of Mumbai

02527-272399 | Mob: 9594962018 | ssjcop3241@gmail.com

Administrative Office



An administrative office typically refers to the central hub within an organization where administrative tasks are managed and coordinated. The administrative office plays a crucial role in supporting various departments and ensuring the efficient functioning of the organization as a whole.



PRINCIPAL
SSJ COP, Asangaon
Thane (M.S.) 421601